

Resting state

The raw files were read using the EEGLAB toolbox in MATLAB. The uploaded files named with mat suffixes contain all the signals. After loading the files, the “EEG.data” variable included 129 EEG signals. The first 128 signals were from the electrode E1 to electrode E128. The last signal from Cz was the reference electrode.

The location of the 128 electrodes placement (E1 to E128) is shown in Fig. 1.

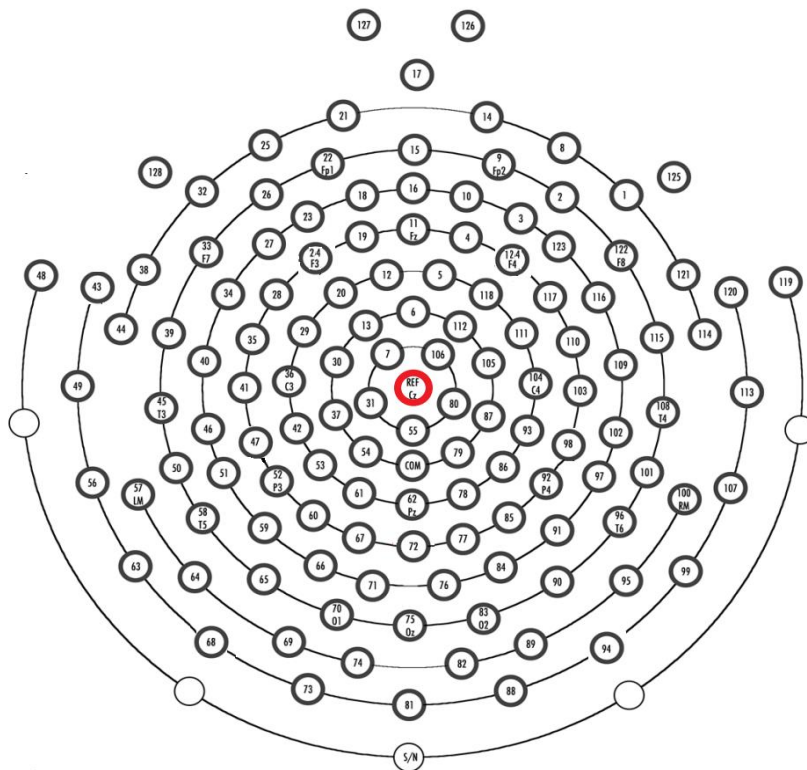


Fig.1. 128 channel HydroCel Geodesic Sensor Net (HCGSN)